



HW HAUS WALKENSTEIN

GREATSPOT
Immobilien





HISTORY AND VISION UNITED

The House Walkenstein has a fascinating history dating back to the year 1074. It was initially owned by the Babenberg family before passing to the Kuenring family in the late 13th century. Between 1660 and 1671, Johann Ehrenreich Freiherr von Sonnau had the estate built in its present form. In 1890, a cold-water spa was established, making the estate a popular destination.

Today, Walkenstein Mansion combines historical charm with modern concepts uniquely. The castle's vision is to create a center for assisted living, holistic healing and cultural events that incorporates both the traditions of the region and modern amenities.

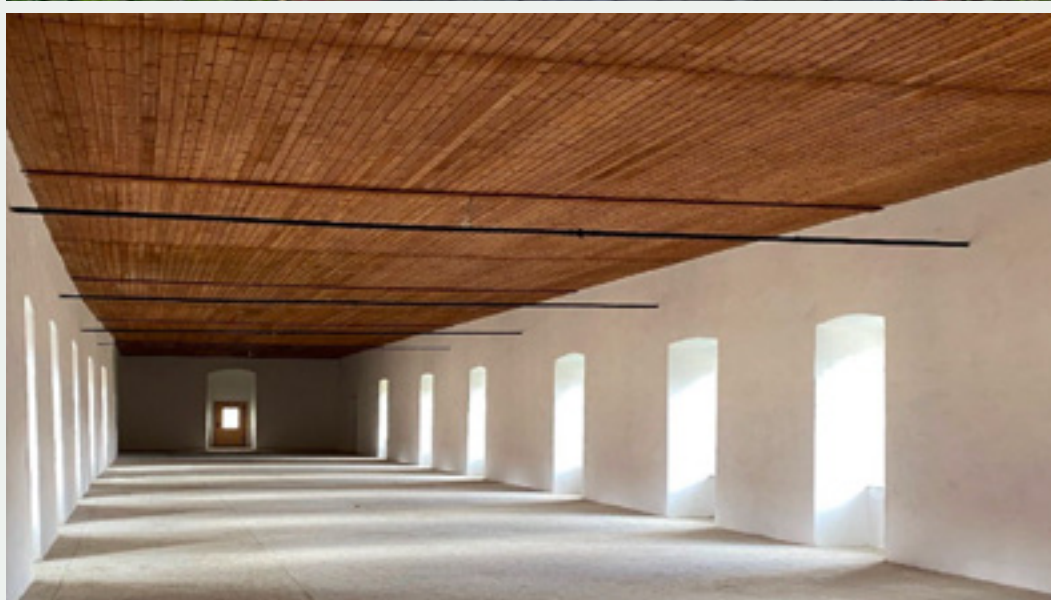


WIDE RANGE OF POSSIBLE USES AT WALKENSTEIN MANSION

Make your dream of living in the countryside come true.

This property stands out for its prime location. Just an hour from Vienna and directly connected by the Franz-Josefs Railway, the area offers everything you're looking for. Escape the noise of the big city and finally find peace. Re-root yourself and enjoy life in nature. Here, you could make this dream a reality, and even play on the mini-golf course below the estate all year round.

Due to the estate's layout, outdoor area design, diverse spaces, and impressive size, the possibilities for use are almost limitless. The property is uniquely situated in a tranquil, natural setting, yet benefits from excellent access to infrastructure and the city.



Potential Uses



ASSISTED LIVING

The Walkenstein House would become a place where health, well-being, and culture are woven into a harmonious symbiosis. Combining historical charm, modern comforts, and proximity to major European cities, Walkenstein House offers a unique and valuable experience for residents and visitors alike. In advanced age, one seeks to enjoy each day with joy and dignity, among like-minded individuals in an appealing environment where culture, care, and health are within reach, and everyone can enjoy time together. The potential for varied design of residential units within this historic building is exceptional. The splendid, spacious rooms, ideal for cultural gatherings and health-promoting activities, are already organically integrated into the estate.

Potential Uses



LIVING SPACES

The existing structure already suggests 7–9 spacious living units, offering ample room not only for families, couples, and singles seeking peace and nature, but also for older adults who wish to enjoy their later years in a barrier-free, single-level environment amidst a pleasant community. A shared dining salon and expansive gardens invite residents to relax and connect. The property's convenient access to nearby locations makes it easy for residents to host visitors and go on excursions. This setting offers an ideal space for multigenerational living, as well as for „cluster living“ among couples, singles, and families, enabling shared experiences and synergy effects that arise from similar lifestyles.

Potential Uses



EXHIBITIONS

Cultural events at Walkenstein House, especially in the realm of classical music, aim to blend the local musical tradition with international influences. The concert hall on the estate can host not only local artists but also musicians from Vienna, Prague, and other parts of the world. This proximity to cultural hubs enables a diverse and high-quality program. Additionally, Walkenstein House can serve as a venue for local cultural and educational events, theater performances, and markets that reflect the history and traditions of the region.

The concept of an artist residency is also well-suited here; the unique combination of living, creating, and exhibiting provides an inspiring setting.

CELEBRATIONS AND EVENTS

The two exceptional banquet halls, the welcoming courtyard, additional garden spaces, and the nearby charming church offer an ideal setting for celebrations such as weddings, baptisms, birthdays, and more.

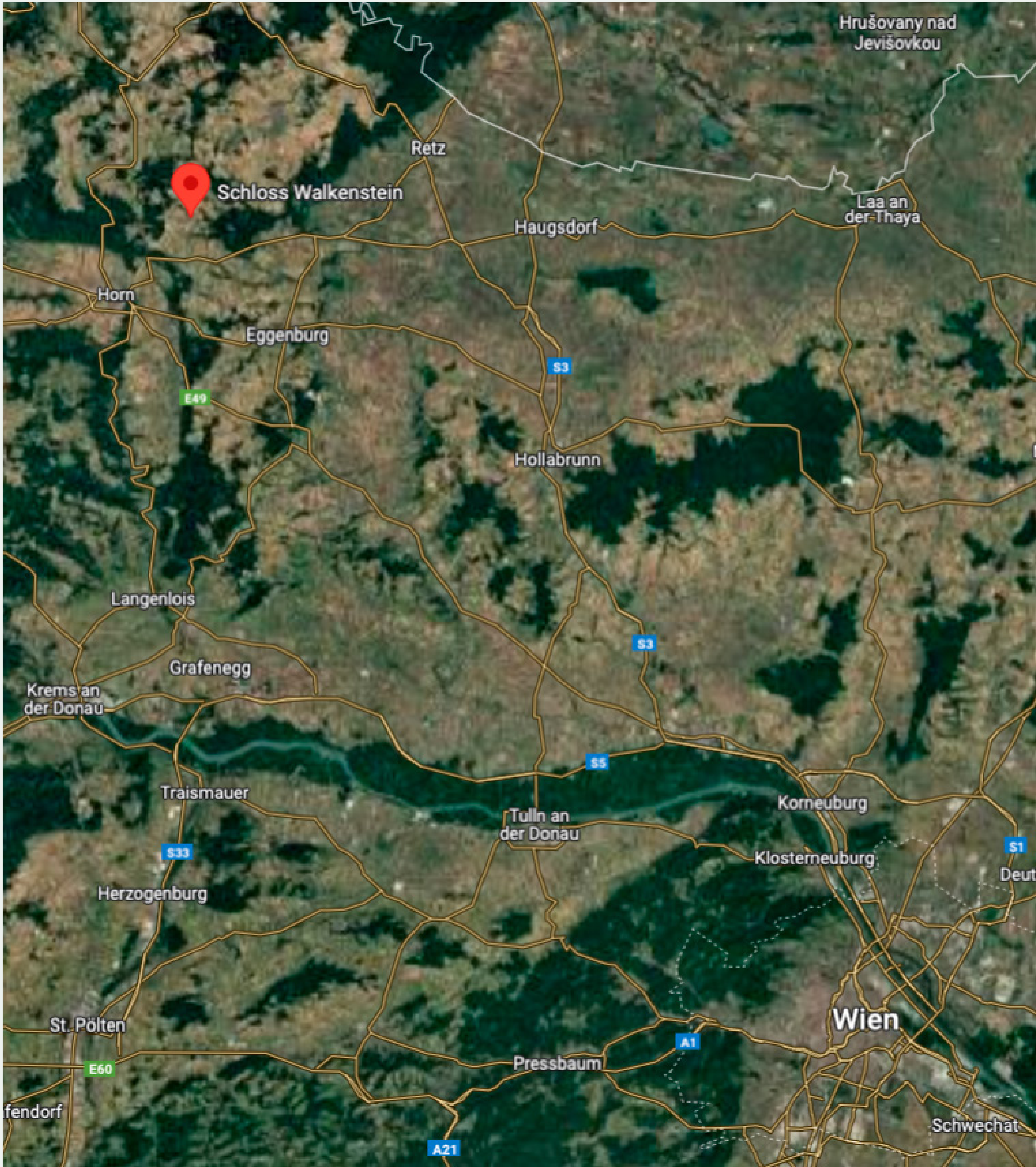
Potential Uses



HEALTH SERVICES

With approximately 600m² across two historic halls, along with additional smaller practice and therapy rooms, Walkenstein House offers ample space for a wide range of medical and wellness services. A health center here would integrate the local flora and fauna into its treatments and therapies. Using regional herbs and plants in health treatments aims to foster a connection with nature and local surroundings. Additionally, the close proximity to Vienna and Prague provides easy access for international guests seeking authentic wellness treatments.

There is plenty of space for yoga, Pilates, and other movement therapies, as well as for practices dedicated to other health-enhancing treatments.



LOCATION

CONNECTIONS

This quiet, restorative location near Vienna and Prague is conveniently situated close to the Franz-Josefs Railway, providing easy access to the cultural and urban amenities of these cities.

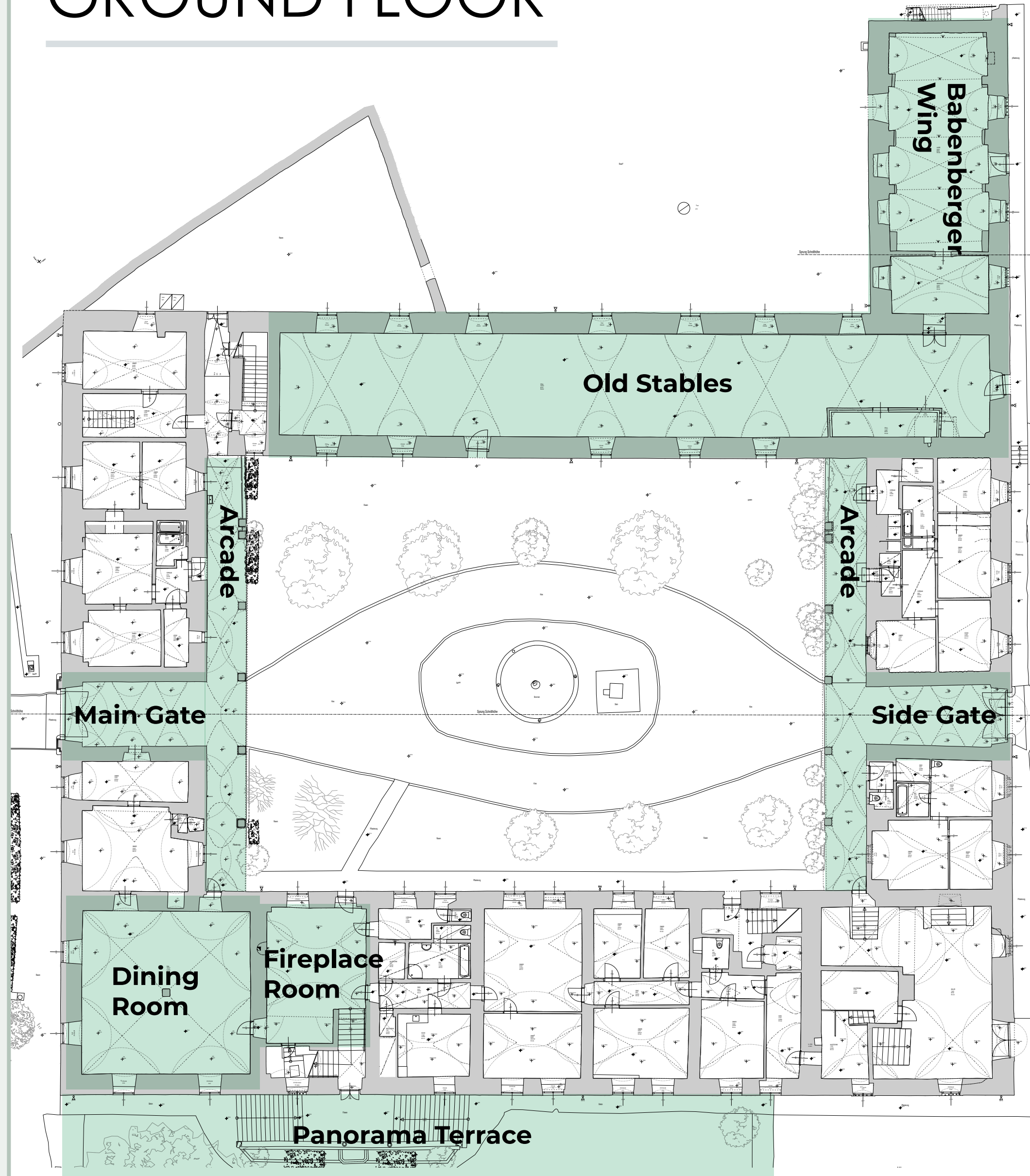
INFRASTRUCTURE

Parking spaces, fiber-optic internet, and connections to public transportation are readily available. Nearby facilities include doctors, hospitals, retirement homes, schools, kindergartens, museums, sports facilities, and playgrounds, all within close proximity to the estate.

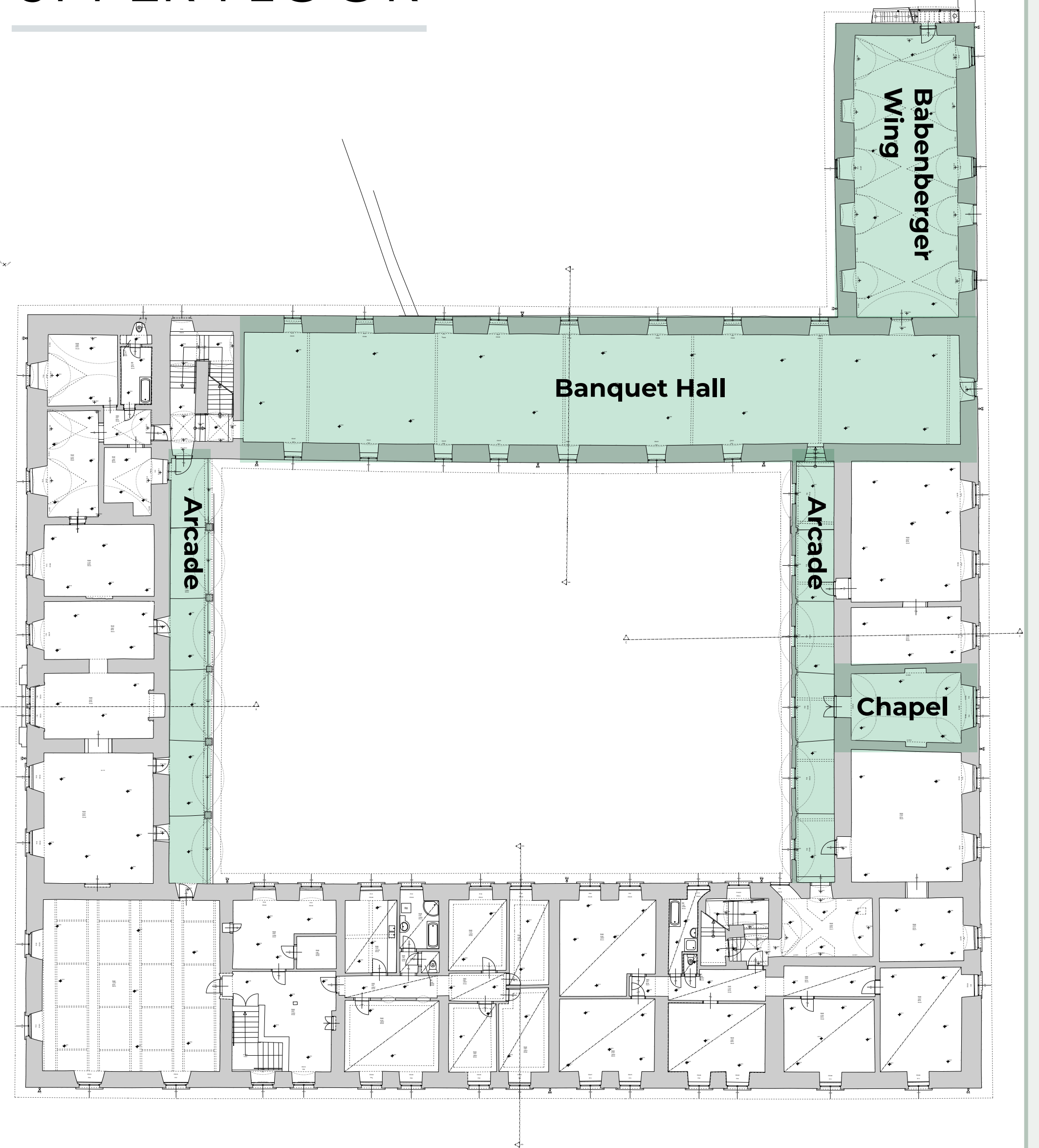


Floor Plans

GROUND FLOOR



UPPER FLOOR



Contact

ADDRESS

Schloss Walkenstein
Walkenstein 1
3751 Sigmundsherberg

INFORMATION AND INQUIRIES

E. info@greatspot.at
W. www.walkenstein.at